



POSITION DESCRIPTION

PLUMBER



**Gladstone Ports  
Corporation**

Growth, prosperity, community.

## POSITION DESCRIPTION

### PLUMBER

**Position Number**  
**Position Status**  
**Position Supervisor**  
**Department**  
**Job Level of Work**

**Vacant**  
**Building Services Supervisor**  
**Asset Management & Project Services**  
**I**

### Job Purpose Statement

This role is accountable for routine servicing, inspections, preventative maintenance, breakdowns, trouble shooting and general repairs and maintenance on building infrastructure to support its safe and efficient operation.

### Job Accountabilities

- Undertake general plumbing maintenance trade services in accordance with:
  - The Plumber Job Model to support the efficient operation of all GPC infrastructure and equipment
  - Known routines, methods and procedures which require the exercise of discretion and judgement.
- Perform skilled work in the repair, installation and maintenance of plumbing fixtures and piping systems.
- Undertake safe work practices and promptly address any safety issues for hazard minimisation and injury prevention.
- Comply with GPC's environmental control policies/procedures and promptly address environmental issues to minimise harm.
- Organise work schedule, prioritising against established maintenance plans and strategies.
  - Prioritise work to ensure quality job completion within identified timeframes.
- Work towards achieving financial responsibility through identification of cost saving measures and effective utilisation of resources.
- Comply with all the Health, Safety and Environment management system requirements;
- Comply with GPC's Code of Conduct and lead by example GPC's values and guiding principles:
 

**Growth, Prosperity, Community**

Our values represent the essence of our organisation. They are deeply held convictions, priorities, and underlying assumptions that influence our attitudes, behaviours and shared beliefs – why we are here, what we stand for and what we will strive for “together”.
- Comply with GPC's policies, standards and procedures in the workplace.

### Decision Making Authority & Impact

As in accordance with company policy/systems:

- Ability to access necessary information, obtain resources and use of facilities or equipment needed to carry out the work of this role.

## Job Challenges & Impacts

- To develop effective communication networks and techniques to provide information to relevant stakeholders
- Ability to adapt to changing work plans
- Establish and maintain effective working relationships within GPC departments
- Operate effectively in an environment where there are conflicting demands on resources
- Complete work in an efficient and timely fashion and to the desired specifications

The role impacts the GPC design and drafting services.

- Annual operating expenses for Department (Contributory)
- Building Services projects on time, budget and to specifications (Contributory)

## Key Relationships

### Internal

- Building Services Team
- Day Work Coordinator & Building Services Supervisor
  - Discuss progress of projects/assigned tasks
  - To establish project scope, timing, standards and budgetary requirements
  - Two-way regular communication to receive/share strategic information and report on project/goal status and contingency plans and to be provided with direction, development and performance management
- Other GPC Departments
  - Discuss progress of projects/assigned tasks

### External

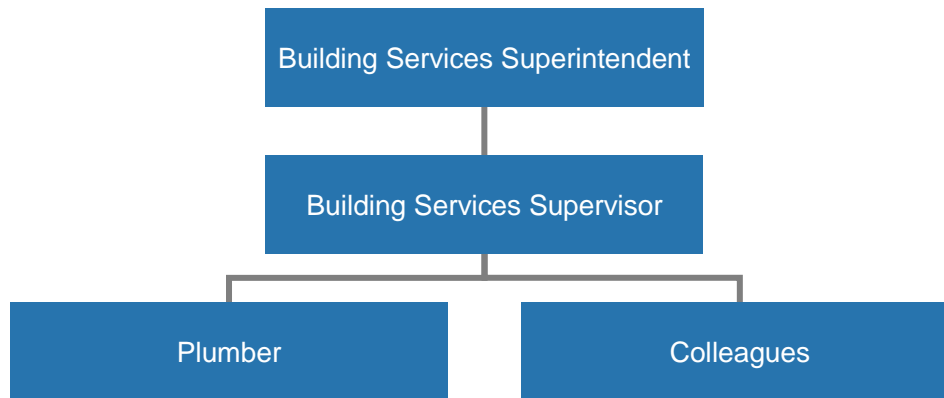
- Liaises with consultants, contractors, other authorities, Government departments, suppliers and Port users:
  - To exchange information to contribute to achieving work outcomes

## Level of Supervision

Direction is provided on the tasks to be undertaken with latitude to rearrange sequences and discriminate between established methods. Guidance on the approach to standard circumstances is provided in procedures, guidance on the approach to non-standard circumstances is provided by a supervisor. Checking is selective rather than constant.



## Organisation Chart



## Formal Qualifications

- Trade qualification as a Plumber
- Current Plumbing License
- Driver's License (Manual Transmission)

## Selection Criteria

Candidates, please provide detailed examples of how you exhibit the experience, knowledge, and skills required for the position when preparing responses to the selection criteria. Please refer to our Job Applicant Guide for instructions on how to respond to the selection criteria.

Competency	Description
1. Plumbing codes, building codes and manufacturing guidelines	<ul style="list-style-type: none"> <li>Understands obligations and the required work practices relevant to the area of work.</li> <li>Applies knowledge in accordance with the relevant guideline.</li> </ul>
2. Piping and plumbing equipment	<ul style="list-style-type: none"> <li>Installation, maintenance and repair</li> <li>Measure, cut and assemble</li> <li>Knowledge and application of associated techniques, tools and methods</li> </ul>
3. Water, Steam and gas heating units	<ul style="list-style-type: none"> <li>Knowledge and application of associated techniques, tools and methods</li> </ul>
4. Sanitation and ventilation principles	<ul style="list-style-type: none"> <li>Knowledge and application of associated techniques, tools and methods</li> </ul>
5. Safety	<ul style="list-style-type: none"> <li>Ability to proactively promote, influence and engage in a positive safety culture.</li> </ul>
6. Communication	<ul style="list-style-type: none"> <li>Demonstrated interpersonal, verbal and written skills including the ability to liaise and create positive relationships inside and outside GPC.</li> </ul>
7. Modelling GPC Values & Guiding Principles	<ul style="list-style-type: none"> <li>Our values of Growth, Prosperity and Community underpin our behaviours in pursuit of becoming the most respected Port in the nation. Willingness to understand, demonstrate and encourage the values and behaviours of GPC.</li> </ul>