



POSITION DESCRIPTION

Project Technical Support Officer (Mechanical) – Asset Strategies



**Gladstone Ports
Corporation**

Growth, prosperity, community.

POSITION DESCRIPTION

PROJECT TECHNICAL SUPPORT OFFICER (MECHANICAL) – ASSET STRATEGIES

Position Number	2292
Position Status	Temporary
Position Supervisor	Maintenance Systems Specialist
Department	Asset Management & Project Services
Job Level of Work	I

Job Purpose Statement

This role is accountable for developing asset strategies for high criticality assets across GPC facilities.

Job Accountabilities

- Contribute to the development of asset strategies on critical infrastructure at GPC.
- Apply RCM (Reliability Centred Maintenance)/FMECA (Failure Mode Effects Criticality Analysis) methodologies to critical equipment to build strategies that ensure safe and reliable plant.
- Identifying, monitoring and advising on opportunities to improve the reliability of the Authority's assets and their performance.
- You will be required to reference GPC's site and industry standards while engaging with stakeholders from Technical Services, Maintenance and other subject matter experts to ensure all aspects of the strategy development and statutory compliance are considered.
- Undertake safe work practices and promptly address any safety issues for hazard minimisation and injury prevention.
- Comply with all the Health, Safety and Environment management system requirements;
- Comply with GPC's Code of Conduct and lead by example GPC's values and guiding principles:
 - Growth, Prosperity, Community**
Our values represent the essence of our organisation. They are deeply held convictions, priorities, and underlying assumptions that influence our attitudes, behaviours and shared beliefs – why we are here, what we stand for and what we will strive for "together".
- Comply with GPC's policies, standards and procedures in the workplace.

Decision Making Authority & Impact

As in accordance with company policy/systems:

- Ability to access necessary information, obtain resources and use of facilities or equipment needed to carry out the work of this role.

Job Challenges & Impacts

- To develop effective communication networks and techniques to provide information to relevant stakeholders
- Ability to adapt to changing work plans
- Establish and maintain effective working relationships within GPC departments
- Operate effectively in an environment where there are conflicting demands on resources
- Complete work in an efficient and timely fashion and to the desired quality and specifications

Key Relationships

Internal

- Interaction with Reliability Engineer:
 - Two-way communication to receive reliability related issues and report on strategic project. Job status and contingency plans.
 - Provide recommendations on asset strategy improvements
- Interaction with Maintenance Systems Specialist, Maintenance Supervisors, Maintenance Technical Coordinators, Technical Services Department and project support contractors:
 - Feedback information.
 - Interaction with colleagues in other business areas, in particular the Asset Management and Operations areas.
 - To ensure that work and services are carried out efficiently and to the satisfaction of clients.

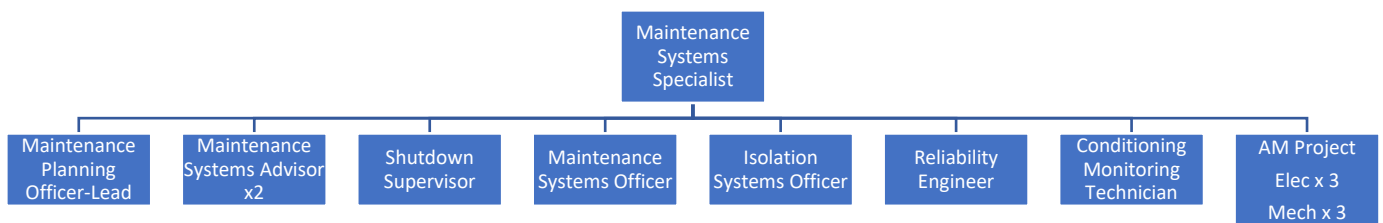
External

- Outside organisations as required.

Level of Supervision

Direction is provided on the tasks to be undertaken with latitude to rearrange sequences and discriminate between established methods. Guidance on the approach to standard circumstances is provided in procedures, guidance on the approach to non-standard circumstances is provided by a supervisor. Checking is selective rather than constant.

Organisation Chart



Formal Qualifications

- Trade qualification as a certified Mechanical Tradesperson (Mandatory);
- Asset Management tertiary qualification (Desirable).

Selection Criteria

Candidates, please provide detailed examples of how you exhibit the experience, knowledge, and skills required for the position when preparing responses to the selection criteria. Please refer to our Job Applicant Guide for instructions on how to respond to the selection criteria.

Competency	Description
1. Mechanical Asset Strategy Knowledge	<ul style="list-style-type: none"> • Demonstrated experience and working knowledge of materials handling assets; • Previous experience and demonstrated working knowledge of asset strategy development for heavy infrastructure; • Demonstrated ability to source technical information required to develop asset strategy tactics.
2. Stakeholder Engagement	<ul style="list-style-type: none"> • Proven written and verbal communications skills with a strong attention to detail; • High level PC skills and expertise in MS Office suite including excel; • Ability to organise and facilitate asset strategy workshops; • Well-developed analytical and critical thinking skills; • High level of organisational skills, with the ability to manage multiple priorities and deadlines to produce quality results.
3. Safety	<ul style="list-style-type: none"> • Ability to proactively promote, influence and engage in a positive safety culture.
4. Communication	<ul style="list-style-type: none"> • Demonstrated interpersonal, verbal and written skills including the ability to liaise and create positive relationships inside and outside GPC.
5. Modelling GPC Values & Guiding Principles	<ul style="list-style-type: none"> • Our values of Growth, Prosperity and Community underpin our behaviours in pursuit of becoming the most respected Port in the nation. Willingness to understand, demonstrate and encourage the values and behaviours of GPC.