

Information Package

Maintenance Fitter Water and Wastewater



APPLICATIONS CLOSE: Friday 26 April 2024

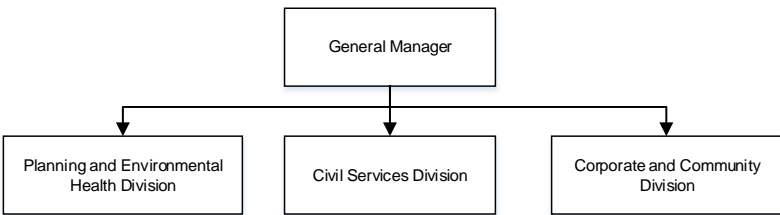
Position Overview

Reporting to the Supervisor Wastewater, this position will assist in the repair and maintenance of Council’s treatment plants, water and wastewater infrastructure and a variety of other plant and machinery items. A key aspect of the role will be to assist to develop, implement and monitor mechanical maintenance programs according to specifications, budget and Council WHS, risk, environmental, quality and other requirements.

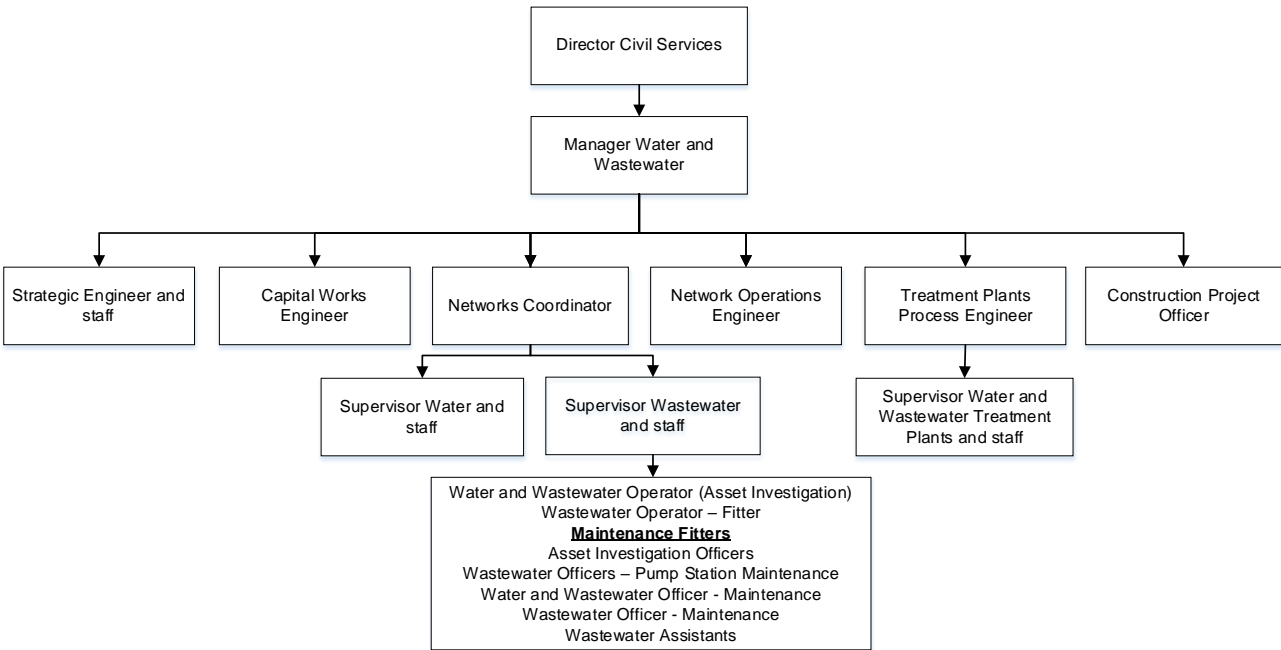
This position will work closely with the team to ensure the provision of high quality customer service and the achievement of section goals and objectives.

Structure

Corporate Structure



Section Structure



Corporate Vision and Values

It is considered highly important that the vision and values of Council's employees align with that of Council. It is therefore paramount that the successful candidate for this position demonstrates qualities that will assist Council in achieving the following:

Vision: The Ballina Shire is safe, with a connected community, a healthy environment and a thriving economy.

Community Values: Creative | Accessible | Respect | Energetic | Safe

Pre-employment Assessments

Prior to being appointed to the position of Maintenance Fitter - Water and Wastewater, short-listed candidates will need to successfully complete the following pre-employment assessments:

- Pre-Employment Functional and Medical – undertaken with Council's exercise physiologist to assess strength, fitness, physical capabilities and lung function to determine suitability to the duties of the position.
- Pre-Employment Audio Examination – undertaken with Council's hearing specialist to test for pre-existing conditions and to ascertain whether hearing levels are sufficient to safely perform the duties of the position.
- Blood Test – to determine immunity to Hepatitis A and Hepatitis B.
- Urine Test – to test for the presence of drugs and/or alcohol.

Remuneration Package

Conditions of employment will be in accordance with the terms and conditions of the Local Government (State) Award. The position of Maintenance Fitter - Water and Wastewater is assessed at Grade 8 under Council's salary structure, providing an annual salary range of \$61,700 to \$70,800 (plus superannuation), dependent upon experience, skills and qualifications.

In addition, employees are provided with a Council uniform and equipment to enable them to fulfil their position requirements, currently enjoy a nine day fortnight working arrangement and have access to a range of other benefits including educational assistance initiatives, a very attractive training support program.

Application Requirements

Applicants must complete an application online via the following link: <https://ballina.nsw.gov.au/careers--88>, which involves addressing some key selection criteria for the position. Applications that do not address these criteria will not be considered. In addition, a resume will need to be provided with the following details included:

- Relevant education and qualifications (interviewed candidates will need to produce original qualifications at time of interview)
- Relevant work experience
- Contact details of at least two professional referees, including your current employer.

Recruitment Process

Council's recruitment process is conducted according to strict confidentiality and equal employment opportunity standards. It is Council's aim to complete the recruitment process and notify candidates of an outcome within four weeks of the closing date, however this timeframe can be extended due to unforeseen circumstances. As a guide, the expected timeframe for the recruitment process for Maintenance Fitter - Water and Wastewater is as follows:

Closing date:	Friday 26 April 2024
Interview date:	Week commencing 13 May 2024
Pre-employment process:	Week commencing 20 May 2024
Candidates notified of outcome:	Week commencing 20 May 2024

For further information on this recruitment process, please refer to Council's website or contact Council's People and Culture section on 02 6686 1443.

Position Description

Position Summary

Position Title:	Maintenance Fitter – Water and Wastewater
Position Status:	Permanent, full time
Reports to:	Supervisor Wastewater
Location:	Ballina Wastewater Treatment Plant Fishery Creek Drive, Ballina
Applicable Grade:	Grade 8
Additional requirements:	Requirement to work regularly outside of normal business hours Requirement to work on-call Requirement to work weekends or shifts as required

Position Objective

- To effectively work as part of a team to carry out maintenance and repair to Council's treatment plants, water and wastewater infrastructure and a variety of other plant and machinery items.
- To assist in monitoring, supervising and training apprentices in plant and machinery maintenance duties.
- To provide a high level of customer service to Council's internal and external clients to ensure efficient and effective operations.

Organisational Relationships

Within Division:	Director Civil Services Manager Water and Wastewater Networks Coordinator Supervisor Wastewater Other Water and Wastewater staff
Within Council:	General Manager Workshop staff All Council employees
External to Council:	Members of the public Suppliers Contractors

Our Vision

The Ballina Shire is safe, with a connected community, a healthy environment and a thriving economy.

Our Community Values (CARES)

Creative * Accessible * Respect * Energetic * Safe *

Key Duties and Responsibilities

Key duties of the position include, but are not limited to, the following:

Customer Service

- Provide a high level of customer service when dealing with general enquires and complaints from both internal and external customers.
- Present a positive image of Council to the public.

Application of Technical Skills

- Undertake general maintenance and repair works on Council plant, machinery and other assets, including but not limited to:
 - water and wastewater pump stations
 - water and wastewater treatment plants
 - heavy plant (eg tractors, loaders, excavators)
 - small plant
 - Ballina Materials Recycling Facility
 - swimming pools
 - Burns Point Ferry.
- Contribute to developing, resourcing, implementing and monitoring programs of works for mechanical assets.
- Manage minor projects including the identification of the materials required and ensuring the availability of appropriate tools and equipment to complete works.
- Read and interpret schematic diagrams and drawings relating to plant and equipment.
- Participate in the on-call roster for work outside of normal hours and be available to work overtime when necessary.
- Carry out any other duties as may be necessary and within your skills, competencies and training.

Plant and Machinery Operation

- Operate items of plant and equipment in a safe manner.
- Actively participate in the plant and equipment competency assessment process.
- Hold appropriate licences and tickets prior to operation.

Written Communication

- Accurately complete standard forms, records, reports and paper work, such as plant maintenance records, timesheets, work orders, TfNSW records and WHS related documents.
- Assist in the creation and review of working procedures.

Work Health and Safety

- Ensure that all work is carried out in accordance with Council's safe work procedures and work health and safety policies. This would include conducting the following at all worksites:
 - Ensuring hazard identification, risk assessments and safe work method statements are or have been conducted for all tasks.
 - Ensuring that all appropriate personal protective equipment is used at all times.
 - Ensuring that incident reports are completed for any incident/accident involving personnel or plant.
 - Ensuring that site-specific inductions are conducted including Council employees, contractors and visitors.
 - Complete pre-start safety checks on plant items and ensure safe operation of plant in accordance with Council policies and procedures.
 - Abide by Council policy to maintain a smoke free workplace by not smoking in Council offices, plant and on worksites.
 - Ensure all work is carried out in accordance with Council's Environmental Management Plan, Quality Plans and safety management documents.

Teamwork

- Participate as a positive team member and contribute to the achievement of team goals and objectives.

Training and Mentoring

- Guide and assist in supervision, instruction, training and development of apprentices and labour hire contractors.
- Train and mentor apprentices and record training outcomes to meet apprenticeships requirements.
- Provide constructive and positive feedback and instil quality and safe workmanship.

Continual Improvement

- Contribute to process, system and procedure improvements that deliver quality services and projects.

Key Outcomes and Performance Standards

The below key outcomes and performance standards are required by all staff. They are to be demonstrated each and every year to enable eligibility for assessment of pay progression.

The performance standards must occur within the context of Council's community and work environment, including day to day operations, policies and procedures.

Key Outcome	Performance Standard
<i>Follow defined WHS procedures</i>	<ul style="list-style-type: none"> • Workplace procedures and instructions for controlling risks are followed accurately. • Hazards in the work area are recognised and reported to the immediate supervisor. • Reports on accidents and incidents are provided to the immediate supervisor in accordance with Council requirements. • Assist others in the work team with implementing risk management policies and procedures.
<i>Provide service to customers</i>	<ul style="list-style-type: none"> • Handles requests for action or information using Council's protocol and procedures. • Responds accurately to verbal enquiries from the community about specific work area and functions. • Carries out all processes within the agreed Council timeframes.
<i>Work effectively within and for Ballina Shire Council</i>	<ul style="list-style-type: none"> • Duties are performed in accordance with Council administrative and human resources policies such as timekeeping, information management, WHS and EEO. • Own work is monitored and improved, according to requirements for job quality, customer service. • Requests for assistance from other staff or the public are responded to promptly and appropriately. • Effectively contribute to change processes and other ideas in a constructive and productive way.
<i>Work with others in Council</i>	<ul style="list-style-type: none"> • Duties are undertaken in a manner that promotes cooperation and good relationships within Council. • Work information is shared with co-workers to ensure designated work goals are met. • Communication with others is conducted in a clear and concise manner and focused on the best way to achieve work objectives. • The principles and intent of Equal Employment Opportunity (EEO) are observed and implemented.
<i>Communicate effectively in the workplace</i>	<ul style="list-style-type: none"> • Participation with work group and other teams is supportive, efficient and effective, with the primary goal of helping achieve Council's objectives. • Participation in work meetings is consistent with purpose of meeting and meeting conventions understood and observed. • Information, instructions and decisions are understood and adhered to. • Provide concise, relevant work information in response to supervisor requests within designated timeframes.
<i>Follow defined ethical guidelines from Council, including its Code of Conduct and uphold Council values</i>	<ul style="list-style-type: none"> • Understanding and day to day implementation of Council's Code of Conduct and Public Interest Disclosures Act. • Any potential conflicts of interest are reported immediately to the relevant Council officer. • Support is given to other staff who may wish to report any potential conflicts of interest. • Understand and comply with Fraud and Corruption Policy and Plan.

Selection Criteria

Following are the essential and desirable criteria for the position.

Essential

Applicants must meet the following criteria:

- Behaviour that positively demonstrates Council's values of: creative, accessible, respect, energetic and safe.
- Relevant trade qualification as a mechanical fitter.
- Demonstrated extensive experience in the maintenance and repair of a variety of plant and machinery.
- Proven experience with troubleshooting and repairing hydraulic systems and pumps.
- Proven knowledge of plant operation capabilities and associated maintenance and repair requirements.
- Proven good communication skills, both oral and written.
- Demonstrated digital literacy with experience and competence in computer and devices (e.g. tablet, iPhone) applications.
- Work Safely in the Construction Industry Induction ticket (white card).
- Current immunisation against Hepatitis A and Hepatitis B viruses or willingness to participate in an immunisation program.
- Class C driver licence with the ability to operate manual transmission and a good and safe driving record.
- Willingness and ability to work on call in accordance with roster requirements.
- Knowledge and understanding of the principles and practices of equal employment opportunity, work health and safety, environmental management and risk management and an ability to apply them to the work practices.

Desirable

The following criteria are considered important and demonstrated capacity to satisfy them will be highly regarded:

- Proven experience with welding and fabrication repairs.
- Experience with water and wastewater infrastructure / equipment / treatment plants.
- Demonstrated experience in the direction and supervision of apprentices and contractors, with the ability to lead and motivate a team.
- MR driver licence.
- Forklift ticket.
- Confined Spaces ticket with an ability and willingness to work in confined spaces.
- Safe Working at Heights ticket with an ability and willingness to work at heights.