

Clarence Valley Council

Manager Civil Services





A message from the General Manager

As General Manager at Clarence Valley Council one of my main focus areas has been building relationships with the staff and the community.

With the help of my Executive team we've been lifting ourselves above the operational grind and planning the strategic direction of the organisation. An important element in this is generating a positive influence, building trust and creating a customer focus across all areas of the business.

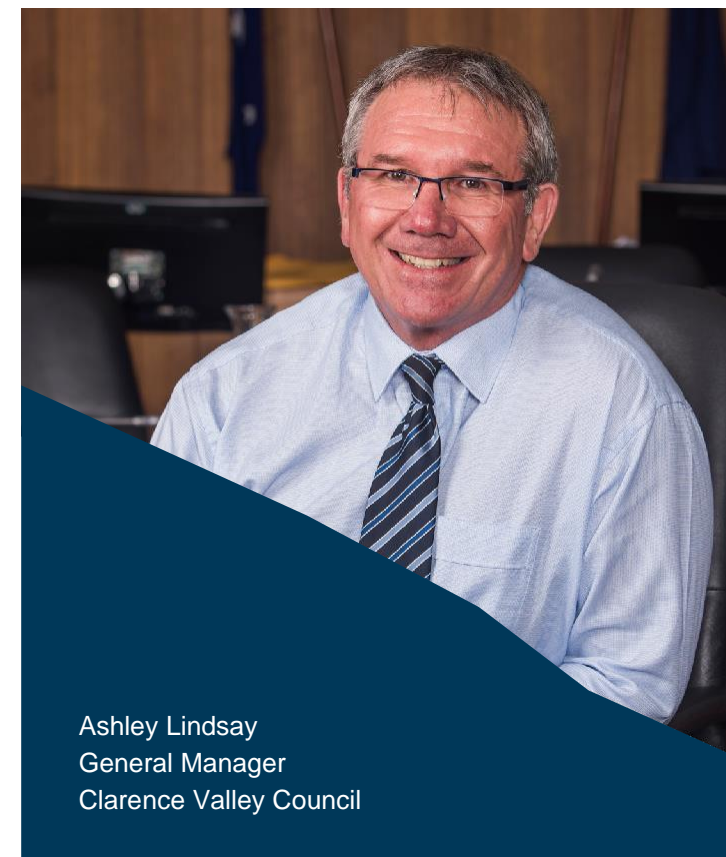
The Clarence Valley has had a period of unprecedented infrastructure spend (over \$6 billion) and with these major projects now complete or nearing completion we've got the welcoming party ready.

The new M1 Pacific Highway has made the travel time to south east Queensland shorter (2hrs from Grafton). Add this to the Clarence Correctional Centre which employs 600 staff and there's significant economic change in store for the area and we're feeling positive.

The Manager Civil Services will need a propensity to prioritise operational direction for the delivery of capital projects and maintenance programs as well as collaborate across the organisation with a strong focus on continuous improvement, and quality assurance. We are looking for a leader to deliver customer focused service delivery, building an increased confidence and trust from our community.

If this sounds like the organisation and the

community you'd like to be part of, then I invite you to join our professional, proactive team and help create a Council that values its employees and delivers services to create a community of opportunity.

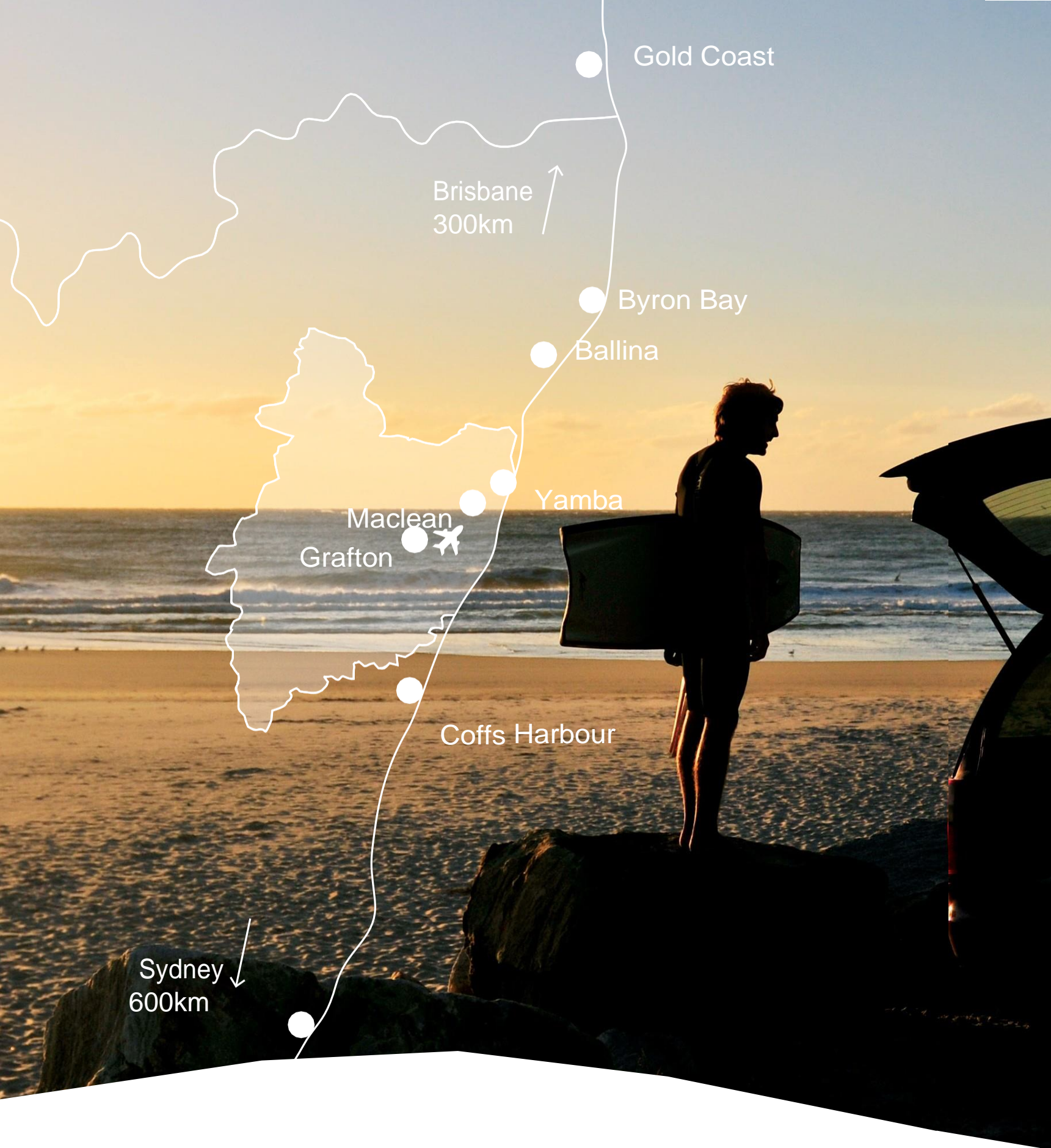


Ashley Lindsay
General Manager
Clarence Valley Council

Contents

A message from the General Manager	3
Clarence Valley snapshot.....	5
Living In the Clarence	6
Clarence Valley Council	7
Making the move.....	8
How to apply	10

Manager Civil Services



Clarence Valley

Snapshot

Located in the Northern Rivers of NSW, the Clarence Valley covers an area of 10,441 square kilometres. The major centres are Grafton, Maclean and Yamba.

We're about 570km north of Sydney and 240km south of Brisbane. In a broader regional context, you'll find Coffs Harbour 40 minutes to the south of Grafton and Byron Bay 90mins north of Maclean.

The Clarence River is our living link for our community of more than 50,000 people. It connects the rural localities and rugged mountain ranges in the west to Grafton, onward to the hinterland villages and historic river towns of Ulmarra and Maclean to the coastal centres of Yamba and Iluka.

Grafton is the economic hub of the Clarence Valley while Yamba is often described as 'what Byron used to be like'.



POPULATION

51,662

MEDIAN AGE

49YRS



GROSS REGIONAL
PRODUCT

2.3BILLION



EMPLOYED WITHIN THE
CLARENCE VALLEY

93%



VISITOR NIGHTS

2.5MILLION



MAJOR URBAN CENTRES

**GRAFTON
MACLEAN
YAMBA**

All this and great coffee, cafes and restaurants too.

Clarence Valley Council



NUMBER OF FULL-TIME
EMPLOYEES 472.02



General Manager
ASHLEY LINDSAY



Director Civil & Works
JAMIE FLEETING



Director Corporate
& Governance
LAURA BLACK



Director Environment
& Planning
ADAM CAMERON

Living in the Clarence

Living in the Clarence is really all about the simple things in life, and showing our kids what that means. We're authentically friendly and engaging we like to say hello as we walk the dog even if we don't know each other. If groups are your thing, there are plenty you can join. Or you may just enjoy a chat over the back fence to your neighbour (yes we do that here), or sharing your surplus home grown vegies with the family down the street (because they keep you in free range eggs) – you see what we mean. Whichever way you look at it you're going to get the feeling that you belong to this special place – and that's because you do. All this and great coffee, cafes and restaurants too.

It is slower here but it doesn't mean missing out. You can pack more into your day because you're not dealing with city headaches like, traffic, parking, queuing up and long waiting lines. There's time for a surf, fishing, games with the kids or a leisurely walk with the dog... yep that's on a work day!

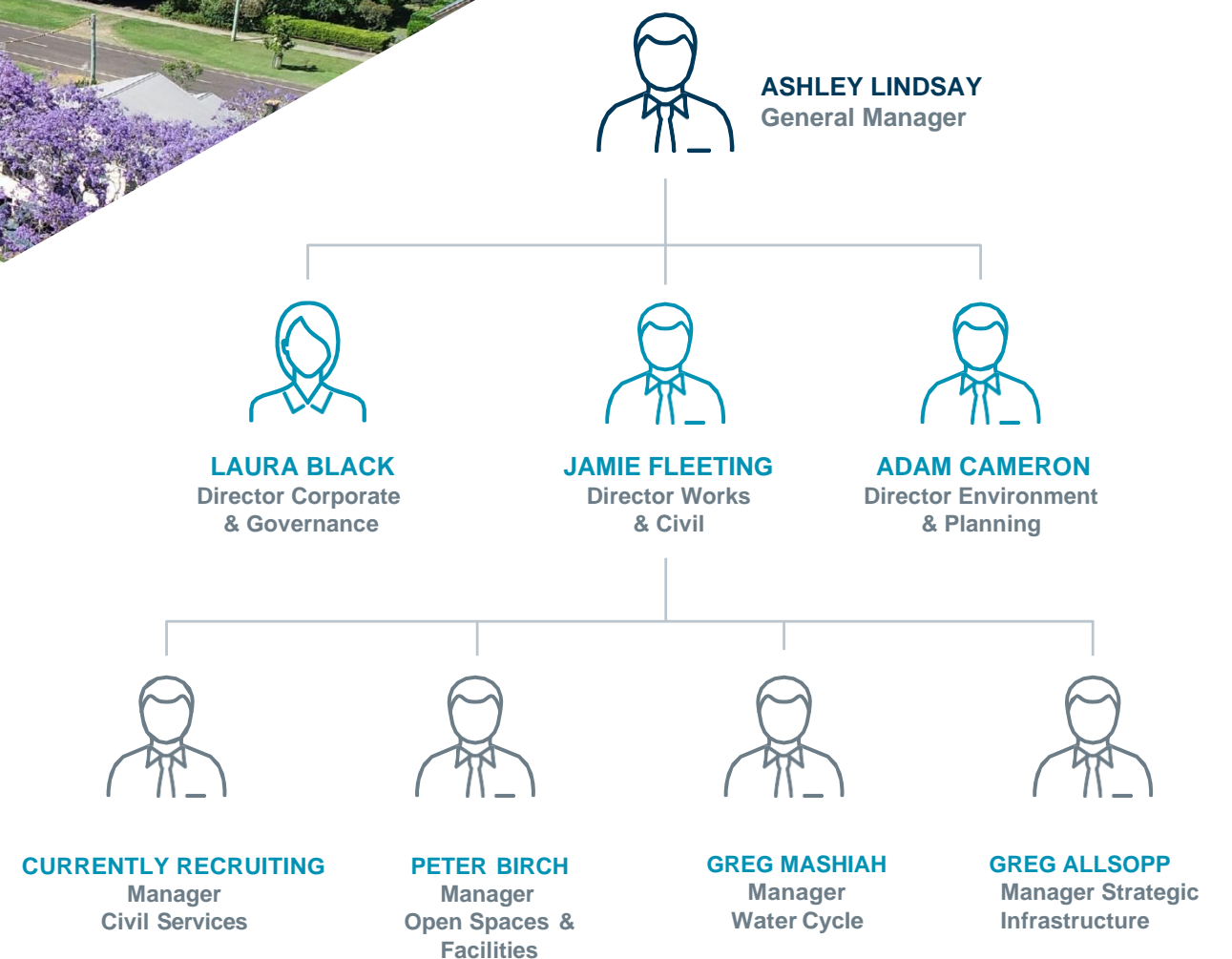
WANT TO KNOW MORE?

Checkout - myclarencevalley.com





Making
the move



*We live here so
we've got lots of
contacts and can
help you with the
connections. Just
give us a call to
chat about it.*

Primary purpose of the role

The Manager Civil Services provides high level advice to Council, the General Manager and the Director Works and Civil. Direction and leadership will be provided in relation to:

- Council's maintenance responsibilities (roads, bridges, drainage, footpaths, public wharves and jetties, boat ramps)
- Council's capital works program
- Risk Management and safe work methodology
- Translating strategic direction into operational outcomes
- Ensuring Council meets its contractual requirements for State Government agencies and supporting emergency response in times of natural disaster.
- Budget management of Civil Services
- Quality assurance and process improvements

To be successful you will need:

- Civil Engineering degree recognised in Australia, demonstrate your learning and ongoing development in the sector, with post graduate qualifications being highly desirable
- Eligible for professional engineers registration
- Demonstrated knowledge of strategic management principles, and proven capacity to apply strategic and lateral thinking in problem analysis and resolution for the long term sustainability of the organisation.
- Demonstrated experience in the development of asset management plans for civil infrastructure

How to apply

Your application should be no more than 5 pages and include the following:

- Cover letter – max 2 pages
 - Addressing the focus capabilities in the Position Description
 - Responding to the two target questions (recommended half page for each)
- A current résumé. Maximum 5 pages
- Two referee contact details

Targeted questions

- What opportunities for improvement have you identified in your division/unit? Select one of these and describe how you planned this, created buy-in, achieved the result and addressed any barriers.
- How have you helped your manager to promote a positive attitude in the team? Give an example.

Got questions?

Jamie Fleeting
Director Works & Civil
P: 02 6640 3511
M: 0448 316 362
www.clarence.nsw.gov.au



