



POSITION DESCRIPTION

TOWN PLANNER

Department:	Planning & Regulation
Reports to:	Manager Planning & Regulation
Location:	Coonabarabran
Grade:	14

COUNCIL OVERVIEW

Warrumbungle Shire is a local government area in the central western region of New South Wales. The Shire is traversed by the Newell Highway and the Golden Highway. Warrumbungle National Park, Coolah Tops and Siding Spring Observatory are major tourist attractions for the Shire. Indigenous history, traditions and culture are recognised as important aspects of Warrumbungle Shire, which was traditionally built on agricultural pursuits with the early establishment of wool growing and beef cattle production followed by cereal cropping and today a burgeoning vine growing and horticultural industry.

The Shire is also a meeting place for the nations of our traditional owners and custodians of the land. The northern part of the shire is home to the Gamilaraay people while the southern part of the shire is home to the Wiradjuri people. The nations of the Weilwan and Kawambarai (Werriri) come into the Shire on the western border.

COUNCIL VALUES

The guiding principles of honesty, integrity, fairness and compassion form the spirit of the team along with respect, transparency, passion, trust and opportunity is how Warrumbungle Shire Council strengthens its working environment to deliver on the aspirations of our community.

PRIMARY PURPOSE OF THE POSITION

Council's Town Planner is responsible for the implementation and oversight of all relevant local government and associated legislation as it applies to the Shire and the Environment and Development Services Division. The incumbent will provide positive input towards the branch budget and ensure timely implementation of programs in accordance with the budget and Management Plan.

The Town Planner provides advisory services to the Director and other Directors and Managers within the organisation as well as providing assistance with coordinating and planning activities and programs within the Planning and Regulation department.

The Town Planner also:

- provides input to all regulatory functions under the relevant acts, especially in the planning and approval area

- leads all Town Planning functions of Council
- is responsible for
 - the implementation of Council's statutory planning policies and
 - meeting Council's statutory requirements through the timely processing of Activity and Development Applications.

KEY ACCOUNTABILITIES

Within the area of responsibility, this role is required to:

- Manage the preparation of 10.7 Planning Certificates
- Process DA approvals for subdivisions, boundary re-alignments and construction projects
- Review and implement Section 7.12 policies; follow up conditions of consent with respect to land development
- Process amendments to Council's planning documents
- Prepare advertisements for developments as required by legislation
- Report on changes to legislation as it affects Council's town planning functions and initiate the required changes to ensure compliance with legislation.
- Ensure subdivision original plans, Section 88B instruments and other documents are in accordance with Determination before signature
- Ensure all DA referrals (internal and external) are issued and followed up
- Develop Council policies for strategic planning processes (future land and service requirements)
- Coordinate the gathering of information and ensure the timely production of Council's State of the Environment Report
- Lead team meetings involving the Development Control Unit and initiate process changes to improve performance
- Monitor, report and implement changes to Council's planning approvals system to improve efficiency
- Prepare complete Development Assessment reports for determination by Council
- Lead and train staff involved in any facet of the town planning function of Council
- Lead the Development Control Plan consolidation project and constantly review policies for improvement.

This is not an exhaustive list of duties, and the job holder may be required to undertake other duties that are within the limits of the employee's skill, competence and training.

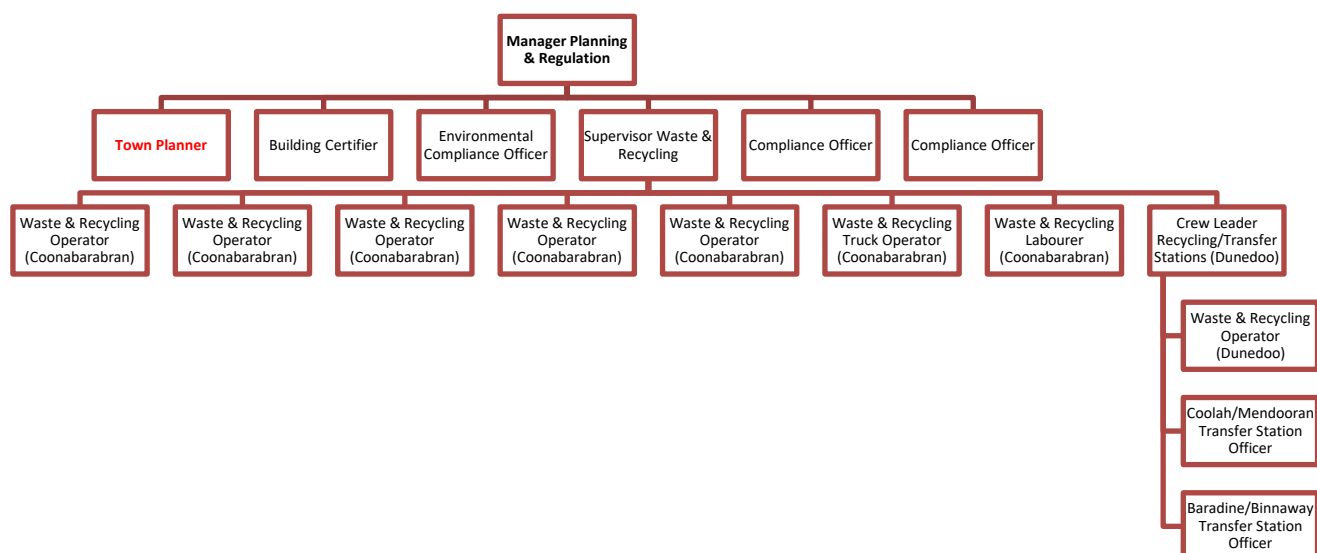
ESSENTIAL REQUIREMENTS

- 1 Commitment to Council's Mission, Values and Code of Conduct.
- 2 Understanding of work health and safety (WHS) in the workplace and commitment to a positive contribution to WHS in the workplace and compliance with Council and legislative requirements.
- 3 Qualifications that enable membership of the Planning Institute of Australia as a Town Planner
- 4 Demonstrated high level oral and written communication skills
- 5 Demonstrated proficiency in computer operations, including word processing, spreadsheets and databases
- 6 Class C NSW Drivers Licence.

DESIRABLE REQUIREMENTS

- 1 At least 12 months' post-qualification relevant work experience, preferably in a multi-functional Local Government environment.
- 2 Experience in Local Government Health, Building and Environmental Management principles
- 3 Demonstrated budget preparation and financial management skills
- 4 Demonstrated knowledge of the principles and practices of WH&S and EEO legislation
- 5 WorkCover OHS Construction Induction Certificate ("whitecard")





DEPARTMENT STRUCTURE



CAPABILITIES FOR THE ROLE

The Local Government Capability Framework describes the core knowledge, skills and abilities expressed as behaviours, which set out clear expectations about performance in local government, ie. “how we do things around here”. It builds on organisational values and creates a common sense of purpose for elected members and all levels of the workforce. The Local Government Capability Framework is available at www.lgnsw.org.au/capability.

Below is the full list of capabilities and the level required for this position. The capabilities in bold are the focus capabilities for this position. Refer to the next section for further information about the focus capabilities.

Local Government Capability Framework		
Capability Group	Capability Name	Level
 Personal attributes	Manage Self	Adept
	Display Resilience and Adaptability	Adept
	Act with Integrity	Adept
	Demonstrate Accountability	Intermediate
 Relationships	Communicate and Engage	Adept
	Community and Customer Focus	Adept
	Work Collaboratively	Adept
	Influence and Negotiate	Adept
 Results	Plan and Prioritise	Intermediate
	Think and Solve Problems	Adept
	Create and Innovate	Intermediate
	Deliver Results	Intermediate
 Resources	Finance	Foundational
	Assets and Tools	Foundational
	Technology and Information	Intermediate
	Procurement and Contracts	Foundational

Focus capabilities

The focus capabilities for the position are those judged to be most important at the time of recruiting to the position. That is, the ones that must be met at least at satisfactory level for a candidate to be suitable for appointment.

Local Government Capability Framework		
Group and Capability	Level	Behavioural Indicators
Personal Attributes Manage Self	Adept	<ul style="list-style-type: none">• Initiates action on team/unit projects, issues and opportunities• Accepts and tackles demanding goals with drive and commitment• Seeks opportunities to apply and develop strengths and skills• Examines and reflects on own performance• Seeks and responds well to feedback and guidance
Relationships Community and Customer Focus	Adept	<ul style="list-style-type: none">• Demonstrates a sound understanding of the interests and needs of customers and the community• Takes responsibility for delivering quality customer-focused services• Listens to customer and community needs and ensures responsiveness• Builds relationships with customers and identifies improvements to services• Finds opportunities to work with internal and external stakeholders to implement improvements to customer services
Results Think and Solve Problems	Adept	<ul style="list-style-type: none">• Draws on numerous sources of information, including past experience, when facing new problems• Demonstrates an understanding of how individual issues relate to larger systems• Makes appropriate recommendations based on synthesis and analysis of complex numerical data and written reports• Uses rigorous logic and a variety of problem solving methods to develop workable solutions• Anticipates, identifies and addresses risks and issues with practical solutions• Leads cross team/unit efforts to resolve common issues or barriers to effectiveness
Results Deliver Results	Intermediate	<ul style="list-style-type: none">• Takes the initiative to progress own and team work tasks• Contributes to the allocation of responsibilities and resources to achieve team/project goals• Consistently delivers high quality work with minimal supervision• Consistently delivers key work outputs on time and on budget

Local Government Capability Framework

Group and Capability	Level	Behavioural Indicators
Resources Technology and Information	Intermediate	<ul style="list-style-type: none">Shows confidence in using core office software and other computer applicationsMakes effective use of records, information and knowledge management systemsSupports the introduction of new technologies to improve efficiency and effectiveness

CONDITIONS OF WORK

Council employees work according to conditions provided under the Local Government (State) Award and Council's policies and systems, including but not restricted to:

- Council's Salary System
- Council's Code of Conduct
- Equal Employment Opportunity
- Drug and alcohol testing.

Work Health and Safety

Employees – All employees of Council have a legal obligation to comply with statutory requirements and Warrumbungle Shire Council's WHS Management system, policies, procedures, Safe Work Method Statements, practices and work instructions. These are introduced to ensure the health and safety of employees, contractors, visitors, volunteers, the public and the environment.

Responsibilities include:

- Being aware of Council's WHS Management system, policies and procedures.
- Performing all work and associated functions in a safe manner.
- Complying with all documented WHS policies, procedures, Safe Work Method Statements, work instructions and verbal instructions issued by the organisation or its officers.
- Correctly using and maintaining all personal protective clothing and equipment supplied by the organisation.
- Identifying hazards, conducting risk assessments, and taking corrective action to eliminate hazards where possible in the workplace, and/or to report hazards and risks in accordance with WHS procedures.
- Establishing and maintaining a high standard of housekeeping and cleanliness within individual work areas and on Warrumbungle Shire Council property generally.
- Reporting and assisting with the investigation of all incidents in the workplace, including minor injuries, near misses and property damage.
- Attending any toolbox, team talks or specific training supplied by Council.
- Being familiar with the location of first aid treatment centres, fire protection facilities and evacuation procedures.
- Working in a manner that will not endanger themselves, other employees or the public.
- Report any concerns for WHS to your Supervisor.

Employees will be held responsible for failing to comply with the Work Health and Safety responsibilities listed above.

Privacy and Confidentiality

Council employees are often privy to confidential and sensitive information. In addition, Council collects personal information from clients for purposes covered within the Privacy and Personal Information Protection Act 1998. This information cannot be used for any purpose other than that which is specifically authorised by the client at the time of collection. Nor can this information, or any impressions gained in the process of interaction with the client, be given either verbally or in any written or electronic form, to any other person other than those duly authorised by Council's Privacy Contact Officer.

It is a condition of employment not to discuss, or disclose by other means, information which may breach privacy legislation, Council's Privacy Management Plan, or bring harm to clients or customers of Council, or which may bring Council into disrepute. Breaches of this condition will be dealt with in accordance with the Disciplinary Procedures Clause of the of the Local Government (State) Award.

Hours of Work

Council's indoor staff work Monday – Friday from 8:15am to 4:30pm. A 10 minute break (paid) is provided for morning tea and three-quarters of an hour (unpaid) for lunch.

Council operates a 19-day / four (4) weeks with one (1) rostered day off per four (4) weeks. Employees are entitled to four (4) weeks annual leave and 15 days sick leave per annum.

Under the Paid Parental Leave Act 2010, employees who have 12 months continuous service with the employer will be eligible for paid parental leave.

Progression

Salary progression is based on a competency assessment document. Assessments are conducted after six (6) months employment and thereafter annually on 1 August or on request.

Superannuation

Council pays the amount required by the Superannuation Guarantee Scheme on behalf of every employee into their preferred superannuation provider. Superannuation is paid weekly to Local Government Super on all earnings. All other funds are paid quarterly, on earnings exceeding \$450 per month, as required by the Australian Taxation Office.

Training

Council provides leave for training and study purposes, based upon the employee's professional development and Council's long term needs as determined by its training plan.

Smoke-Free Workplace

Council's workplaces and vehicles are smoke-free zones. Children's Services based at Bandulla Street and Robertson Street campuses are smoke free to the property boundary, as are Council's swimming pools. Smokers must move a minimum of four (4) metres from doorways into buildings and dispose properly of waste.

Health Monitoring Requirements

This position currently has no health monitoring as part of Council's Health Monitoring Procedure and WHS requirements.

Council Induction

Before commencing duties all workers must complete a Council induction.

Camera Surveillance and GPS tracking

Camera surveillance has been installed in and on Council-owned buildings and in some public spaces in the Council area. Signage is installed to indicate camera locations. GPS tracking has been, or may be, installed, in commuter use vehicles; plant and trucks; small plant; general fleet and leaseback vehicles. All vehicles and plant with GPS tracking installed have an identifying sticker attached. Camera surveillance and GPS tracking is continuous and ongoing.